

Maltese												
Metric	2008	2009	2010	2011	2012	2013	2014	2015	2016	2017	Notes	
Litter #'s & Litter Related Stats	Registered Litters	8,708	7,497	6,185	5,186	4,202	3,547	3,006	2,693	2,546	2,557	# AKC litters registered each year
	Litter Complement	25,374	21,515	17,812	14,824	12,013	10,085	8,420	7,647	7,185	7,302	# Pups in each year's litters (known as the "Complement")
	Average Complement	2.91	2.87	2.88	2.86	2.86	2.84	2.80	2.84	2.82	2.86	Average # of pups per litter
	Individually Registered Pups (to date)	8,626	7,031	5,774	5,160	4,006	3,518	3,056	2,950	2,593	2,423	# Pups from each year's litters individually registered (to date)
	Actual Return Rate (to date)	34.0%	32.7%	32.4%	34.8%	33.3%	34.9%	36.3%	38.6%	36.1%	33.2%	% Pups from each year's litters individually registered (to date)
	Limited Registrations (to date)	914	824	690	661	562	498	457	548	491	535	# Limited Registrations from each year's litters (to date)
	% Complement Registered Limited (to date)	3.6%	3.8%	3.9%	4.5%	4.7%	4.9%	5.4%	7.2%	6.8%	7.3%	% Pups from each year's litters Registered as Limited (to date)
	Limited Revoked (to date)	8	10	5	9	5	1	2	3	-	1	# Limited Revoked Dogs from each year's litters (to date)
	Litters from Revoked Limited (to date)	8	10	5	6	5	1	2	3	-	1	Litters involving each year's Revoked Limited (to date)
	Complement Bitches in Conformation	210	181	179	136	142	140	129	114	119	87	# Bitches from each year's litters in Conformation (to date)
	Complement Dogs in Conformation	122	112	127	100	107	104	84	87	65	49	# Males from each year's litters in Conformation (to date)
	Total Complement in Conformation (to date)	332	293	306	236	249	244	213	201	184	136	Total from each year's litters in Conformation (to date)
	% Complement in Conformation (to date)	1.3%	1.4%	1.7%	1.6%	2.1%	2.4%	2.5%	2.6%	2.6%	1.9%	% of each year's litters in Conformation (to date)
	Complement Bitches Bred	1,457	1,314	1,033	832	741	680	572	519	334	89	Bitches from each year's litters that have been bred (to date)
	Complement Dogs Bred	728	675	510	413	352	300	269	242	176	40	Males from each year's litters that have been bred (to date)
	Total Complement Bred (to date)	2,185	1,989	1,543	1,245	1,093	980	841	761	510	129	Total from each year's litters that have been bred (to date)
% Complement Bred (to date)	8.6%	9.2%	8.7%	8.4%	9.1%	9.7%	10.0%	10.0%	7.1%	1.8%	% of each year's litters that have been bred (to date)	

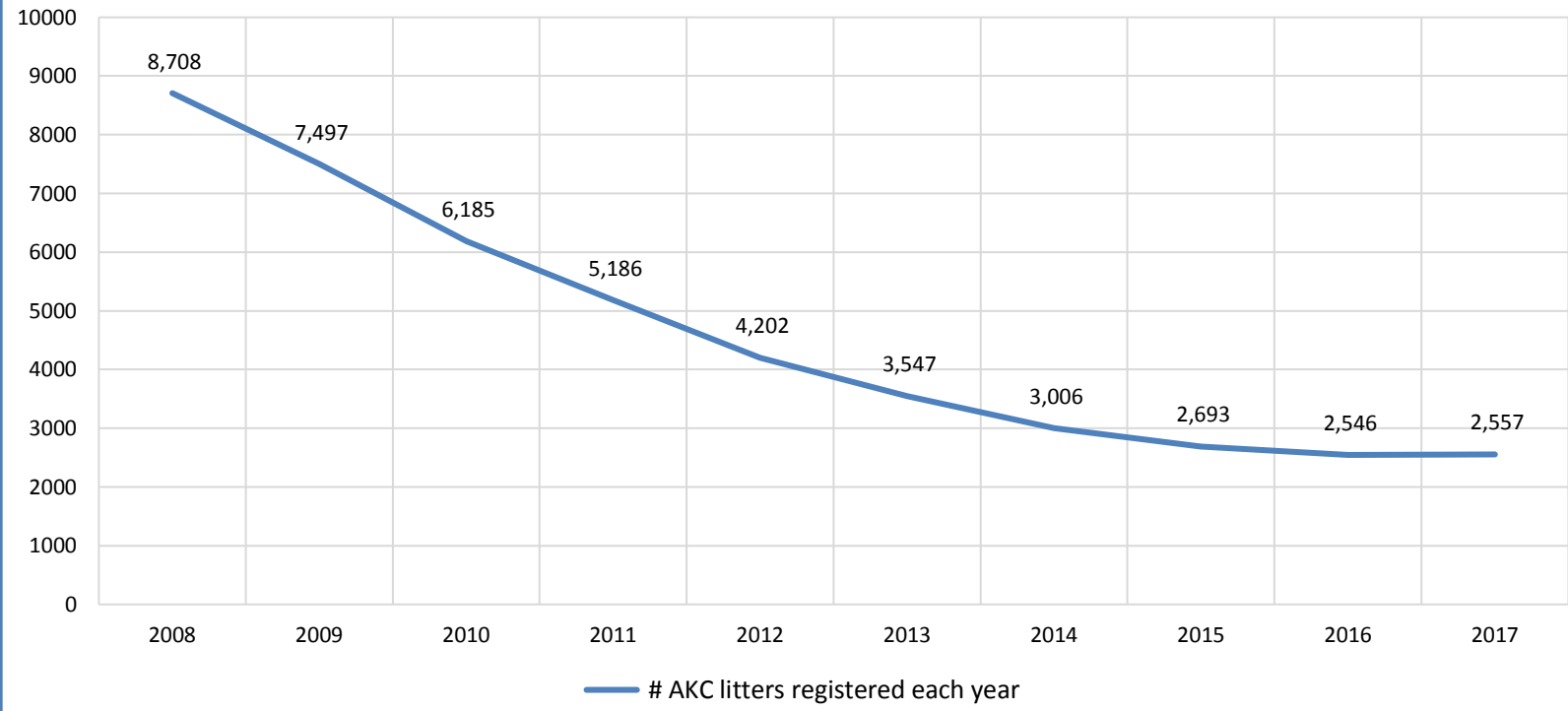
Dog #'s & Dog Related Stats	AKC Dog Registrations	9,892	8,727	6,956	6,415	5,096	4,314	3,835	3,456	3,275	3,238	# Registered from AKC Litters during each year
	FSS Registrations	-	-	-	3	-	-	2	-	-	-	# of FSS Dog Registrations each year
	Conditional Registrations	118	77	103	46	26	37	26	17	31	21	# of Conditional Registrations each year
	Open Registrations	7	-	-	-	-	-	-	-	-	-	# of Open Registrations each year
	Foreign Registrations	28	56	32	25	42	44	51	72	96	89	# of Foreign-born Registrations each year
	Total Dogs Registered	10,045	8,860	7,091	6,489	5,164	4,395	3,914	3,545	3,402	3,348	Total Dog Registrations each year
	Unique Bitches in Conformation (each year)	345	353	310	300	258	261	247	234	214	230	Unique # of bitches in Conformation each year
	Unique Dogs in Conformation (each year)	248	224	204	201	188	191	193	167	153	131	Unique # of males in Conformation each year
	Total Unique in Conformation (each year)	593	577	514	501	446	452	440	401	367	361	Unique # in Conformation each year
	Unique Bitches Bred (each year)	7,115	6,781	5,578	4,712	3,826	3,219	2,735	2,429	2,261	2,022	Unique # bitches bred each year
	Unique Dogs Bred (each year)	4,073	3,886	3,239	2,716	2,234	1,863	1,623	1,415	1,300	1,085	Unique # males bred each year
Total Bred (each year)	11,188	10,667	8,817	7,428	6,060	5,082	4,358	3,844	3,561	3,107	Unique # bred each year	

% Change YOY	2008	2009	2010	2011	2012	2013	2014	2015	2016	2017	
Litters	N/A	-13.9%	-17.5%	-16.2%	-19.0%	-15.6%	-15.3%	-10.4%	-5.5%	0.4%	These %'s are calculated to show the change each year from the previous year.
Litter Complement	N/A	-15.2%	-17.2%	-16.8%	-19.0%	-16.0%	-16.5%	-9.2%	-6.0%	1.6%	
Registered Pups	N/A	-18.5%	-17.9%	-10.6%	-22.4%	-12.2%	-13.1%	-3.5%	-12.1%	-6.6%	

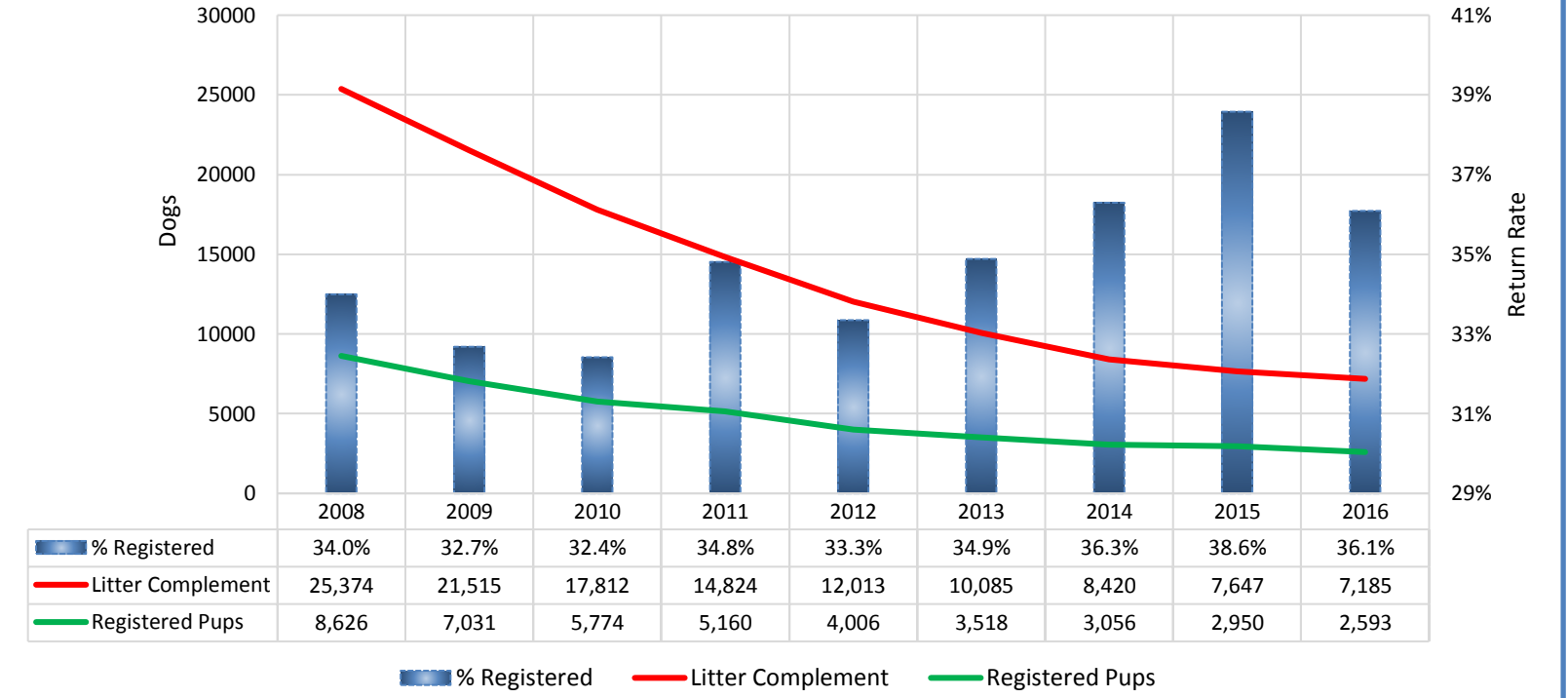
% Change Relative 2008	2008	2009	2010	2011	2012	2013	2014	2015	2016	2017	
Litters	0.0%	-13.9%	-29.0%	-40.4%	-51.7%	-59.3%	-65.5%	-69.1%	-70.8%	-70.6%	These %'s are calculated to show the change each year compared to 2008.
Litter Complement	0.0%	-15.2%	-29.8%	-41.6%	-52.7%	-60.3%	-66.8%	-69.9%	-71.7%	-71.2%	
Registered Pups	0.0%	-18.5%	-33.1%	-40.2%	-53.6%	-59.2%	-64.6%	-65.8%	-69.9%	-71.9%	

Maltese

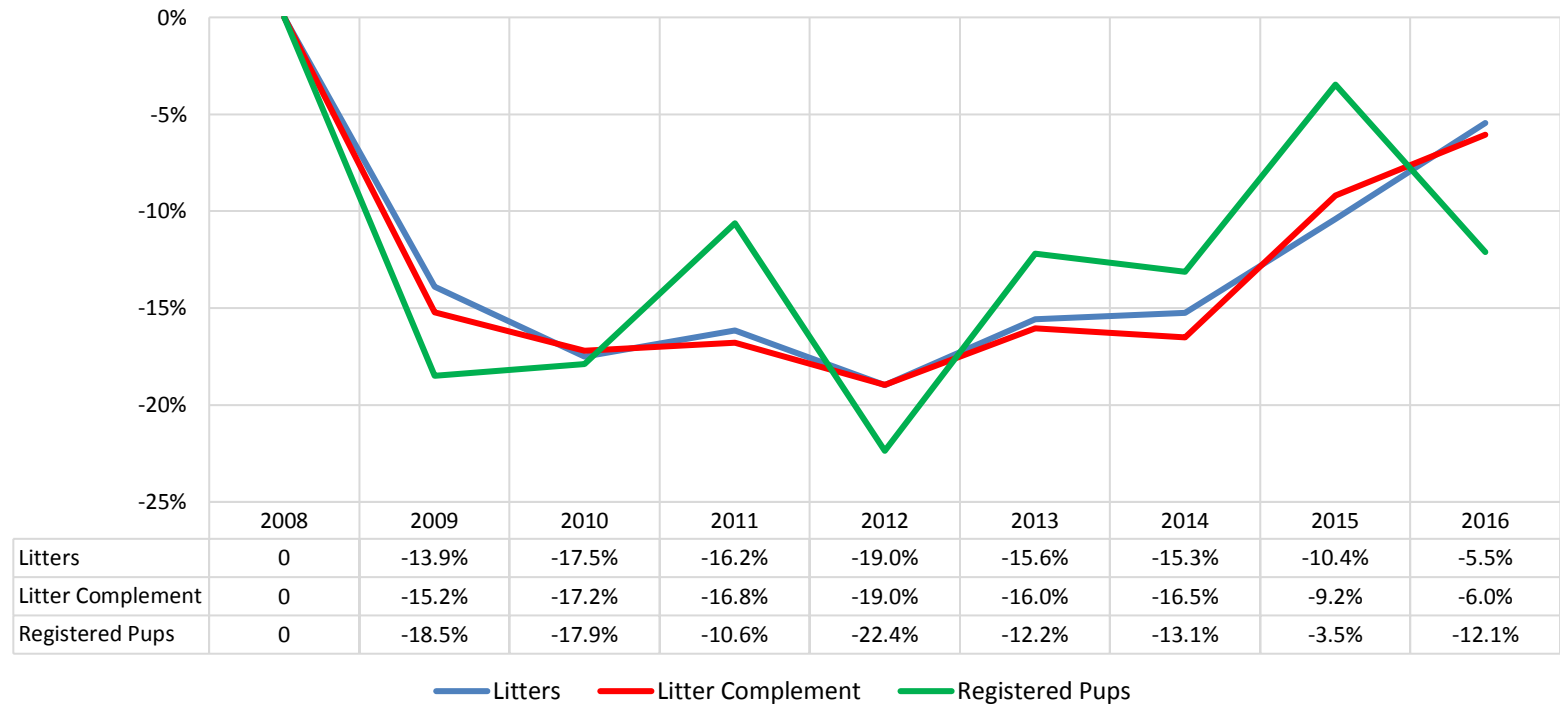
Litters



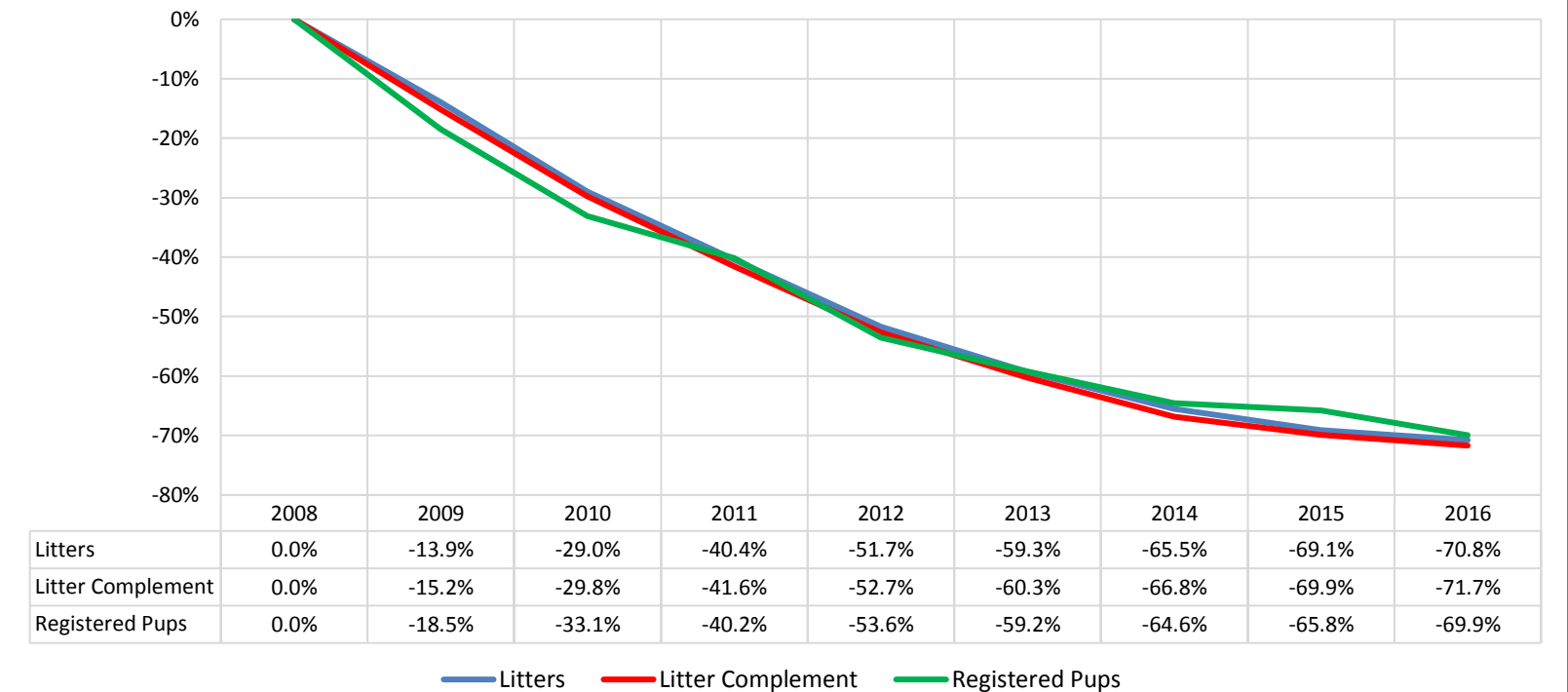
% of Each Year's Litter Complement that were Eventually Registered



Litter Data: % Change from Previous Year (YoY)

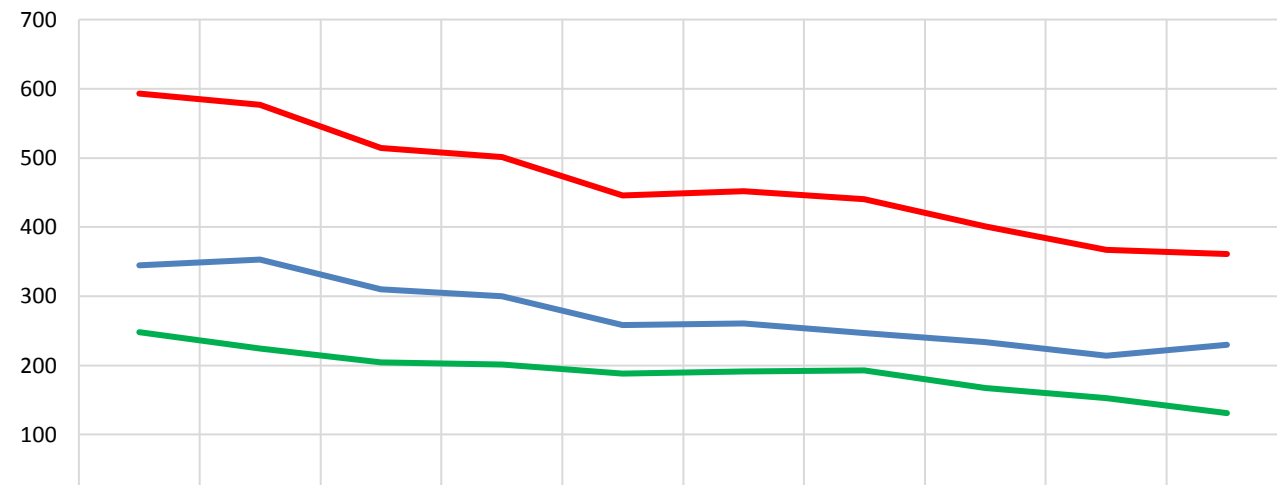


Litter Data: % Change Relative to 2008



Maltese

Competing: Unique Individual Dogs & Bitches in Conformation Each Year



	2008	2009	2010	2011	2012	2013	2014	2015	2016	2017
Unique Dogs (each year)	248	224	204	201	188	191	193	167	153	131
Unique Bitches (each year)	345	353	310	300	258	261	247	234	214	230
Total in Conformation (each year)	593	577	514	501	446	452	440	401	367	361

— Unique Dogs (each year) — Unique Bitches (each year) — Total in Conformation (each year)

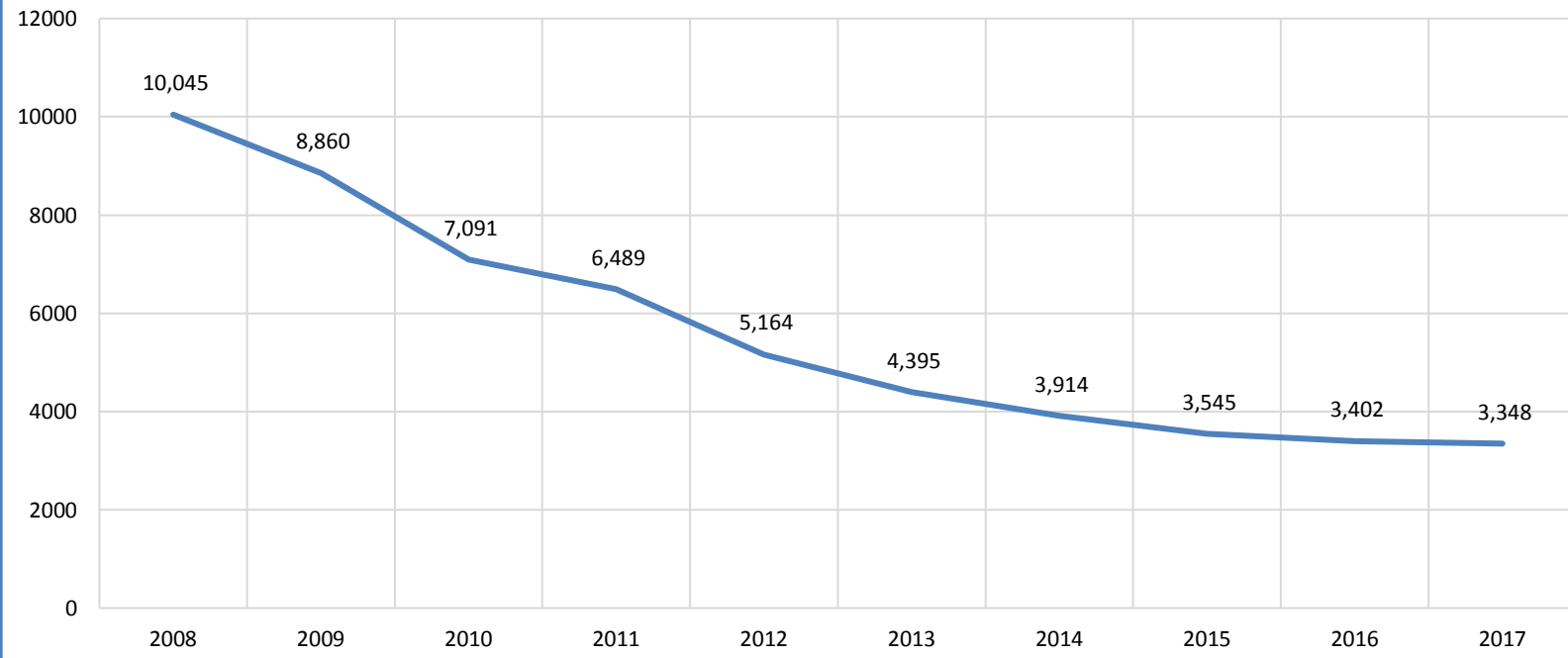
Breeding: Unique Individual Dogs & Bitches Bred Each Year



	2008	2009	2010	2011	2012	2013	2014	2015	2016	2017
Unique Dogs (each year)	4,073	3,886	3,239	2,716	2,234	1,863	1,623	1,415	1,300	1,085
Unique Bitches (each year)	7,115	6,781	5,578	4,712	3,826	3,219	2,735	2,429	2,261	2,022
Total Bred (each year)	11,188	10,667	8,817	7,428	6,060	5,082	4,358	3,844	3,561	3,107

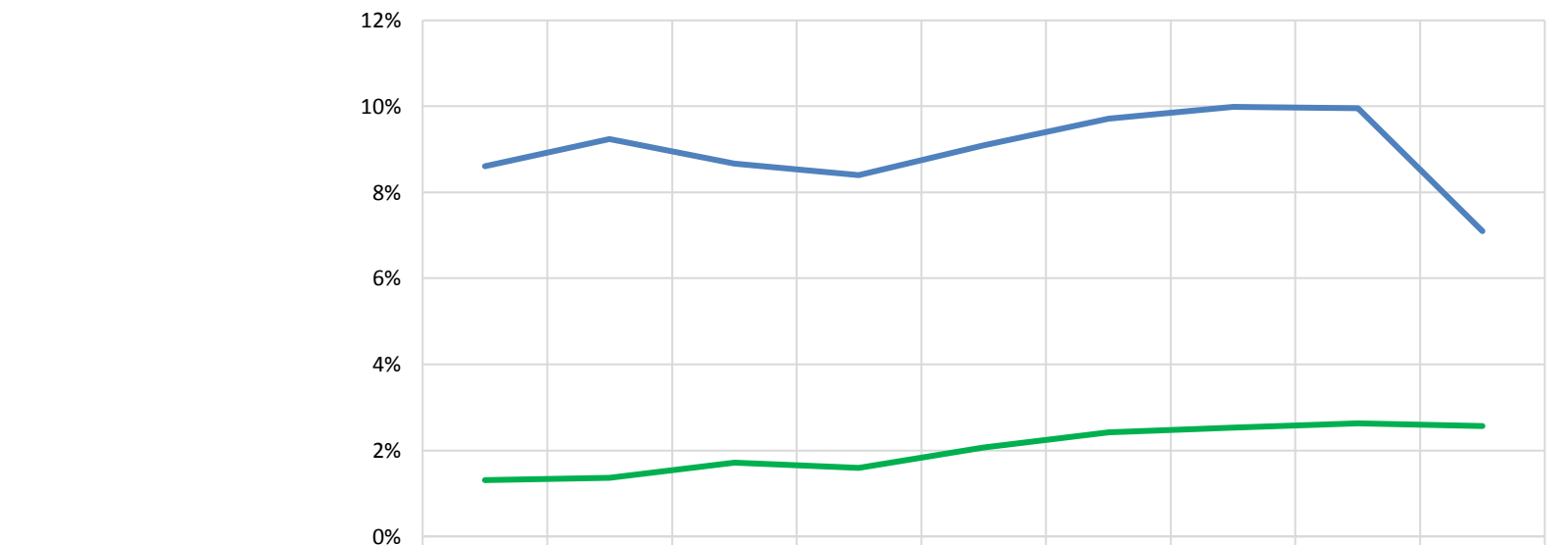
— Unique Dogs (each year) — Unique Bitches (each year) — Total Bred (each year)

Dogs Registered (including FSS, Open, Conditional & Foreign)



— Total Dogs Registered Each Year

% of Each Year's Litter Complement that have been Shown or Bred (to date)



	2008	2009	2010	2011	2012	2013	2014	2015	2016
% Complement in Conformation (to date)	1.3%	1.4%	1.7%	1.6%	2.1%	2.4%	2.5%	2.6%	2.6%
% Complement Bred (to date)	8.6%	9.2%	8.7%	8.4%	9.1%	9.7%	10.0%	10.0%	7.1%

— % Complement in Conformation (to date) — % Complement Bred (to date)